

New range

MASCOT® INDUSTRY

- Designed for modern industry in light weight fabrics
- Smart designs in canvas and twill
- Attention to detail with industrial washing in mind
- Standard industrial colour palette
- Workwear for all types of Industry





MASCOT® INDUSTRY

A recent survey by the European Textile Services Association reported that companies expect quality, protection from risks and comfort from their Workwear. In truly Tested to Work style MASCOT launch this new Industry range of garments where you get just that, and much more. Developed in response to customer demand MASCOT has worked with Industrial Laundries and large end users to develop this modern new alternative for the industrial wearer.

Large industrial end user's corporate identity has also been a goal in the development process. The range is so comprehensive that the warehouse worker, joiner and driver can all have workwear to suit their individual needs, yet at the same time, all be matching. In addition, the lighter weight fabrics used make this an ideal range for working indoors.

DEVELOPED WITH THE INDUSTRIAL LAUNDERER IN MIND

- No velcro is used
- All studs are hidden to avoid risk of scratching or catching
- Studs are open to aid easy replacement (canvas range)
- Robust triple stitched seams
- Durable with long life span - check out our test results!

HELPING THE ENVIRONMENT

A Life Cycle Assessment comparing domestic to industrial washing carried out by the reputed German Öko-Institut showed that:

- Industrial laundries use 64% less water than domestic washing
- Industrial laundries use 73% less energy than domestic washing
- by resorting to an industrial laundry process, 90% less chemicals are used than in typical home washing
- industrial laundries emit 30% less CO₂ and 36% less NO_x than domestic washing etc

BASED ON MARKET DEMANDS WE HAVE TWO LINES WITHIN MASCOT® INDUSTRY

Choose MASCOT® Industry Canvas if you want:

- Superior stylish appearance
- High breathability – more comfortable to work in and great for warm indoor environments
- Modern fitting waists
- Form cut leg construction, making it more comfortable to work in bended positions
- Top loading, easy to use and extremely durable knee pad pockets
- Durable with long life span - check out our test results!
- Open studs for easy replacement
- Light weight fabric great for working indoors
- Enhanced design features

Choose MASCOT® Industry Twill if you want:

- A classic style with a modern twist
- Upgraded modern fit
- Simple straightforward design features
- Lightweight fabric great for working indoors
- You are looking for a new alternative to MASCOT® Concept

TESTED TO WORK



Mascot® test fabric within its new Industry Range in accordance with ISO 15797 procedure 8B, to the requirements of the European Textile Services Association. ETSA grading is given on a scale of 1 to 3, 3 being the highest grade.

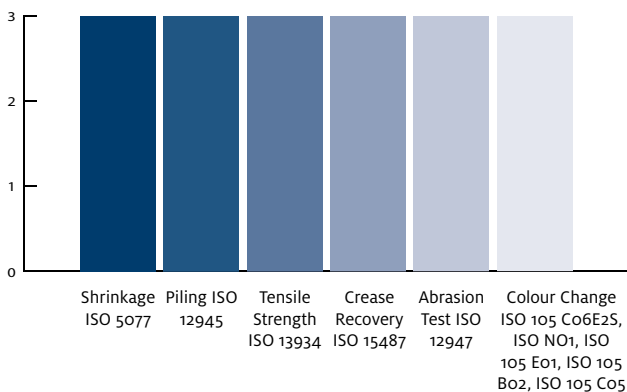
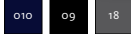


Chart 1: Result against ETSA requirements: Testing of MASCOT Fabric Quality 154, 65% polyester/ 35% cotton, black, canvas weave, 260 gsm, Hohenstein Test Institute

Note: Procedure 8B - washing procedure 8 followed by drying procedure B, carried out 5 times. Crease recovery tested after 3 washes. Tensile strength is tested on unwashed fabric.



NEW



MASCOT® Tulsa Work Jacket 10109-154

65% polyester/35% cotton

260 g/m²

- Fastening with zip, storm flap and hidden press studs to avoid scratching
- Adjustable waist and cuffs with press stud fastening
- Extended back
- Size: XS-4XL



NEW



MASCOT® Tucson Sweatshirt 50204-830

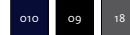
60% cotton/40% polyester

340 g/m²

- Brushed inside making it warm and soft to wear
- Rib at neck, waist and cuffs
- Size: XS-4XL



NEW



MASCOT® Houston Trousers 10179-154

65% polyester/35% cotton

260 g/m²

- Adjustable polyester knee pad pockets with flap and top access
- Adjustable hammer loop and reinforced ruler pocket
- Waist band cut in a way that sits closer to the body and does not gape
- Leg length 32" & 35" | Size: C 42-C 86



NEW



MASCOT® New Haven Service Trousers 10279-154

65% polyester/35% cotton

260 g/m²

- Thigh pockets with flap and extra pockets
- Trouser leg is cut in a way that makes it easier to work in bended positions
- Reflectors to increase safety when working in the dark
- Leg length 32" & 35" | Size: C 42-C 66



NEW



MASCOT® Springfield Craftsmen's Trousers 10131-154

65% polyester/35% cotton

260 g/m²

- Polyester holster pockets with reinforcements and extra pockets
- Adjustable polyester knee pad pockets with flap and top access
- Adjustable hammer loop and reinforced ruler pocket
- Leg length 32" & 35" | Size: C 42-C 66



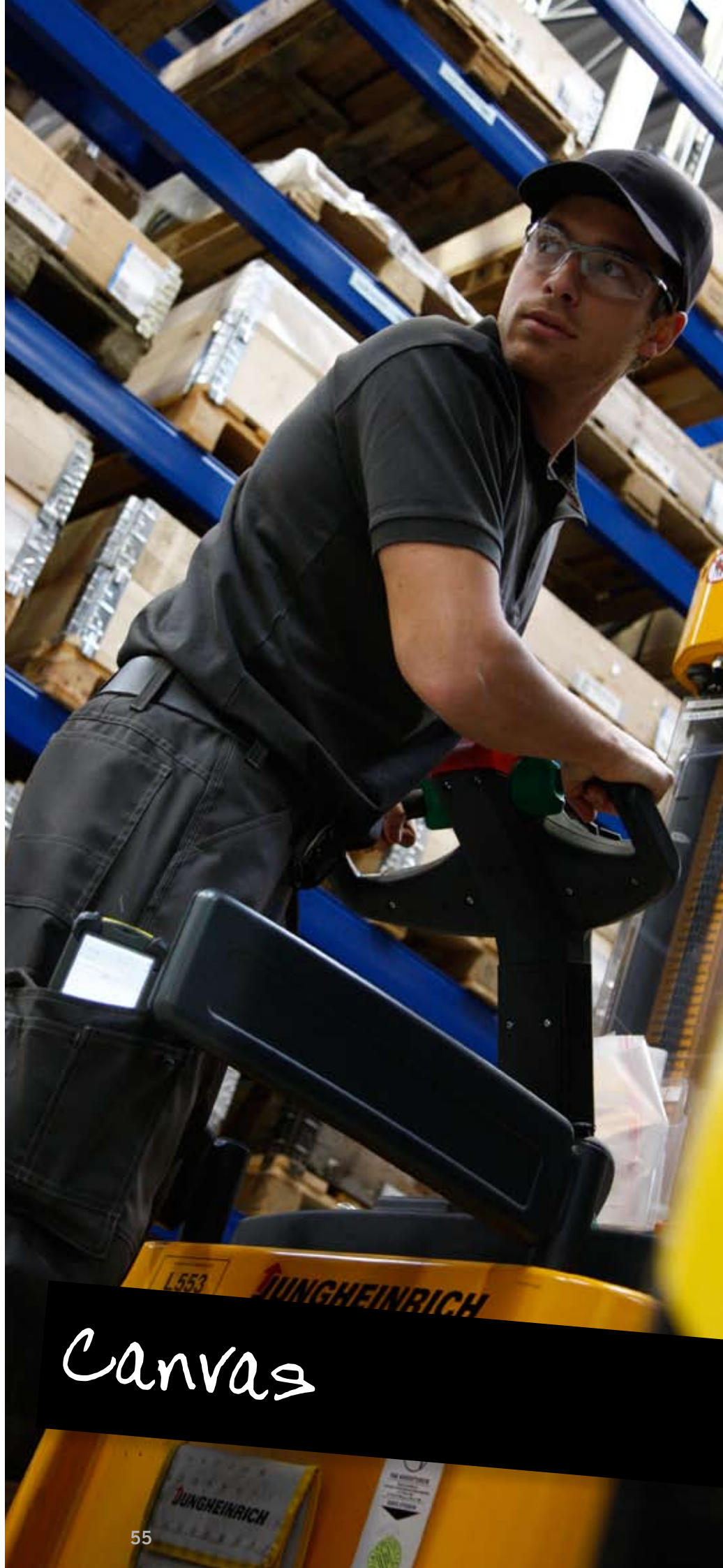
TRIPLE SEAMS

010 09 18

MASCOT® Richmond Bib & Brace 10169-154
65% polyester/35% cotton

260 g/m²

- Adjustable polyester knee pad pockets with flap and top access
- Adjustable waist
- Hidden press studs on thigh pocket and large bib pocket
- Leg length 32" & 35" | Size: C 42-C 66



Canvas



NEW

NEW



010 09 11 18

MASCOT® Akron Boilersuit 10519-442

65% polyester/35% cotton

270 g/m²

- Adjustable knee pad pockets
- Access to trousers from both sides
- Newly developed fit to allow more space and comfort to work, bend and sit
- Leg length 32" | Size: XS-4XL



010 09 11 18

MASCOT® Newark Bib & Brace 10569-442

65% polyester/35% cotton

270 g/m²

- Adjustable knee pad pockets
- Adjustable waist and reinforced ruler pocket
- Thigh pocket with flap and hidden press studs
- Leg length 32" & 35" | Size: C 42-C 66



NEW

Twill



MASCOT® Rockford Work Jacket 10509-442

65% polyester/35% cotton

270 g/m²

- Fastening with zip, storm flap and hidden press studs
- Adjustable waist and cuffs with press studs
- Chest pockets with flap and hidden press studs to avoid scratching
- Size: XS-4XL



MASCOT® Pittsburgh Trousers 10579-442

65% polyester/35% cotton

270 g/m²

- Adjustable knee pad pockets
- Thigh pocket with flap and hidden press studs
- Reinforced ruler pocket
- Leg length 32" & 35" | Size: C 42-C 66



Cotton



MASCOT® Canton Work Jacket 10307-197

Cotton

360 g/m²

- Fastening with zip, storm flap and hidden press studs
- Adjustable waist and cuffs with press studs
- Chest pockets with flap and hidden press studs to avoid scratching
- Size: XS-4XL



MASCOT® Hartford Trousers 10355-197

Cotton

360 g/m²

- Adjustable knee pad pockets with flap and top access
- Adjustable hammer loop, reinforced ruler pocket and pen pockets
- Reflectors to increase safety when working in the dark
- Leg length 32" & 35" | Size: C 42-C 66

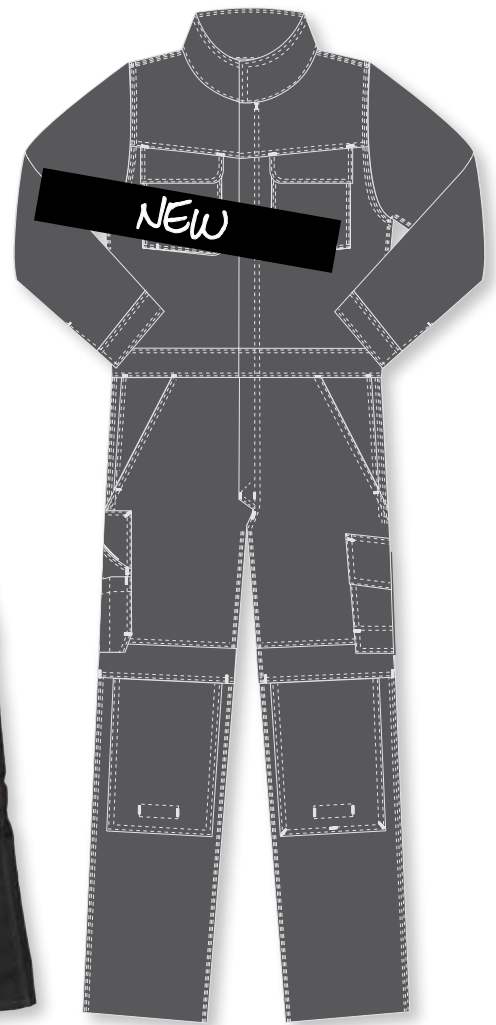


MASCOT® Stamford Bib & Brace 10362-197

Cotton

360 g/m²

- Adjustable knee pad pockets with flap and top access
- Large bib pocket with pen opening and flap with hidden press studs
- Adjustable waist
- Leg length 32" & 35" | Size: C 42-C 66



MASCOT® Cleveland Boilersuit 10311-197

Cotton

360 g/m²

- Adjustable polyester knee pad pockets with flap and top access
- Access to trousers from both sides
- Newly developed fit to allow more space and comfort to work, bend and sit
- Leg length 32" | Size: XS-4XL

NEW



NEW



NEW



NEW



010 09 11 18

MASCOT® Lexington Winter Gilet 10054-194

100% polyester

270 g/m²

- Exceptionally warm pile lining with extended back
- Waist with press stud adjustment
- Fabric complies with the demands of EN343, class 3/3
- Size: XS-4XL

010 09 18

MASCOT® Knoxville Gilet 10154-154

65% polyester/35% cotton

260 g/m²

- Warm with quilted lining and extended back
- Elastic in the arm hole provides a warm fit
- Zip at lower back for printing/ embroidery
- Size: XS-4XL

010 09 11 18

MASCOT® Macon Pilot Jacket 10235-194

100% polyester

270 g/m²

- 4 in 1 jacket, warm pile lining and sleeves are detachable
- Extended back
- Fabric complies with the demands of EN343 - class 3/3
- Size: XS-4XL

09

MASCOT® Louisville Winter Trousers 10090-194

100% polyester

270 g/m²

- Breathable wind and waterproof trousers with taped seams
- Warm quilted lining
- Adjustable knee pad pockets with flap and top access
- Leg length 32" | Size: XS-5XL





NEW



MASCOT® Dayton Parka 10010-194

100% polyester

270 g/m²

- Breathable wind and waterproof with taped seams
- Warm pile lining can zip out
- Detachable lined hood with adjustable drawstring
- Size: XS-4XL



NEW



MASCOT® Columbus Pilot Jacket 10135-194

100% polyester

270 g/m²

- Warm jacket with lining of quilt and quilted fleece
- Zip at lower back for printing/ embroidery
- Fabric complies with the demands of EN343 - class 3/3
- Size: XS-5XL



NEW



MASCOT® Tampa Softshell Stretch Jacket 10001-883

100% polyester

290 g/m²

- Breathable, wind and water-repellent soft shell
- Warm with fleece in inner side
- Adjustable elastic drawstring waist
- Size: XS-4XL



Winterwear